



## Tier 1 Comparison per Faculty & Department

---

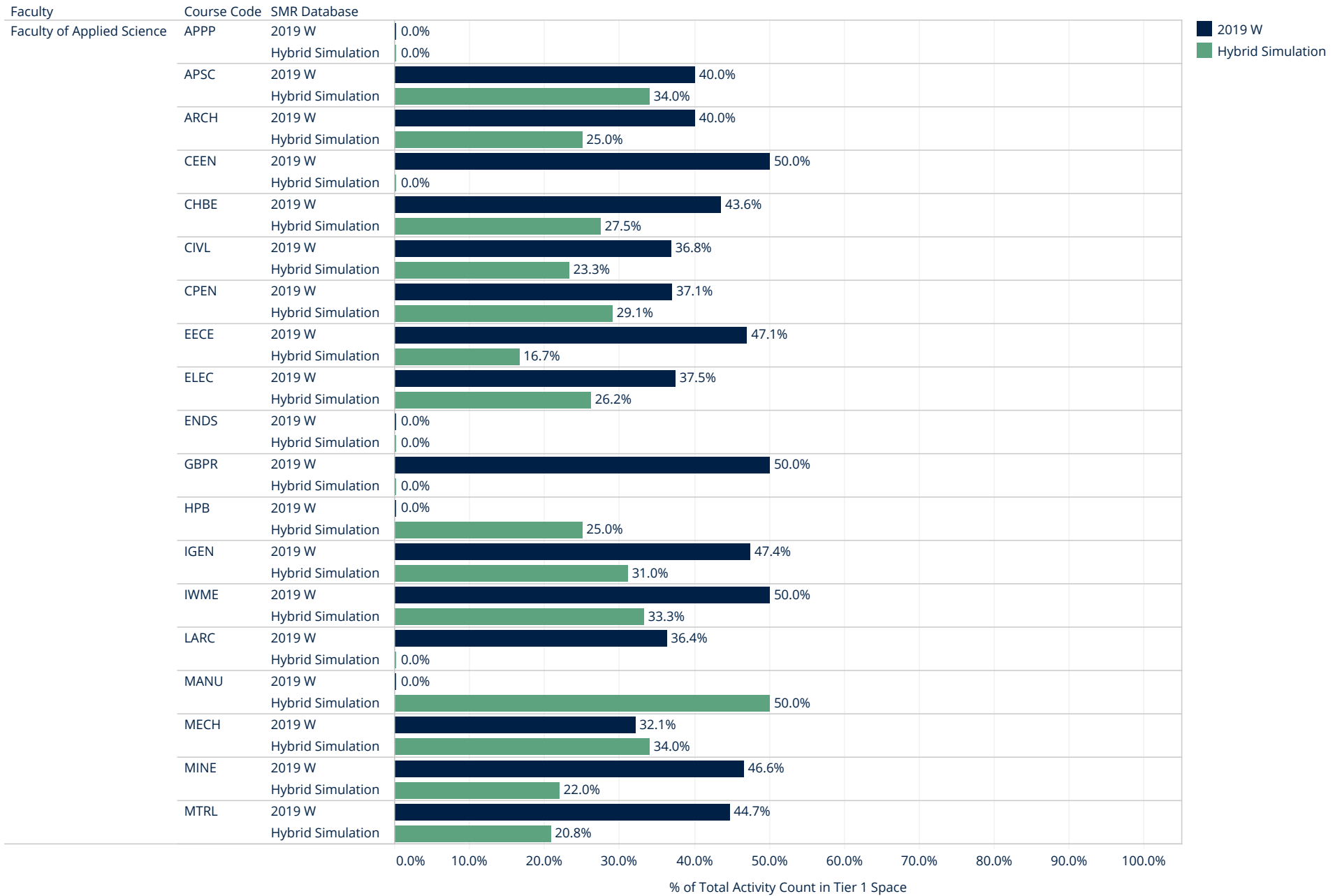
The blue graph (2019W) shows the percentage of a course code's total activities that were scheduled into Tier 1 space. The green graph (Hybrid Simulation) shows the percentage of a course code's activities that were scheduled into what was formerly Tier 1 space.

The Tier 1/Tier 2 model was used for 2019W room allocation, whereas the Hybrid simulation used the Departmental Zone model.

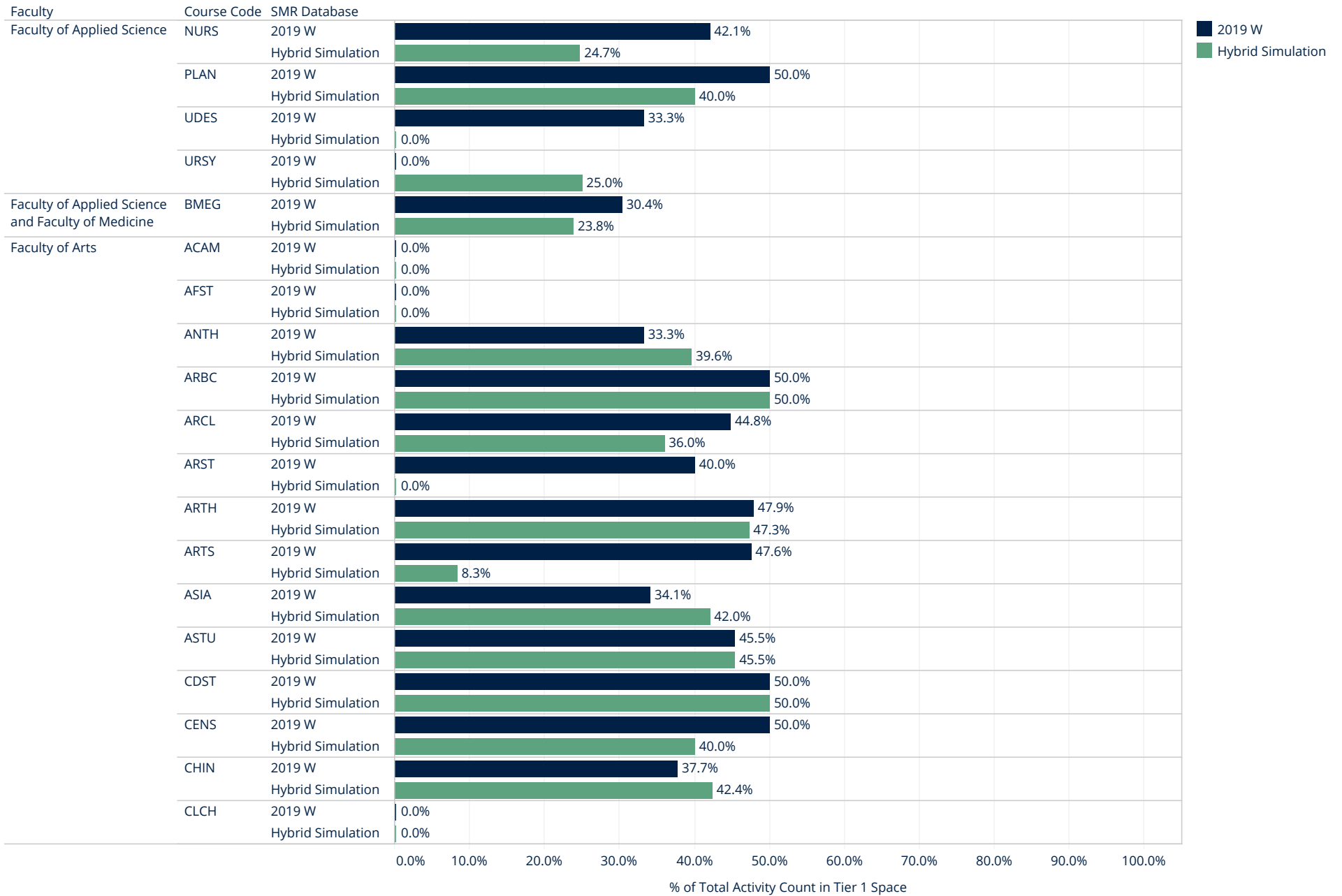
Departments may notice an overlap of their Tier 1 space and the primary and secondary zone rooms, but the rooms listed are not identical. The Departmental Zone model is based on distance from the department centroid, which was identified in the Qualtrics survey submitted in early 2020.

Note: In phase 2 departments will have the opportunity to adjust their department centroid for each course code they oversee. This will impact the rooms that are included in the department's primary and secondary zones for each course code.

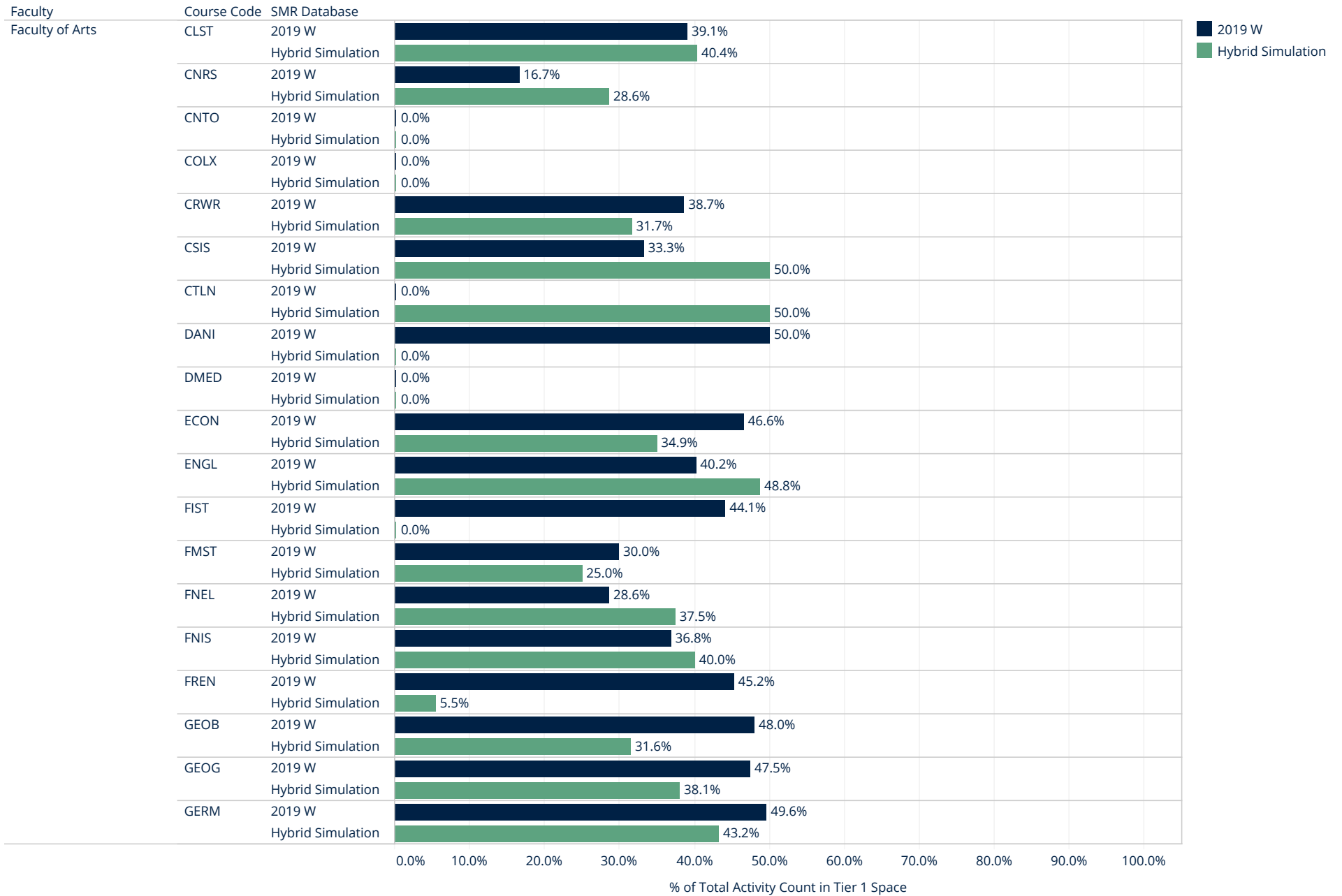
## Tier 1 Comparison per Faculty & Department



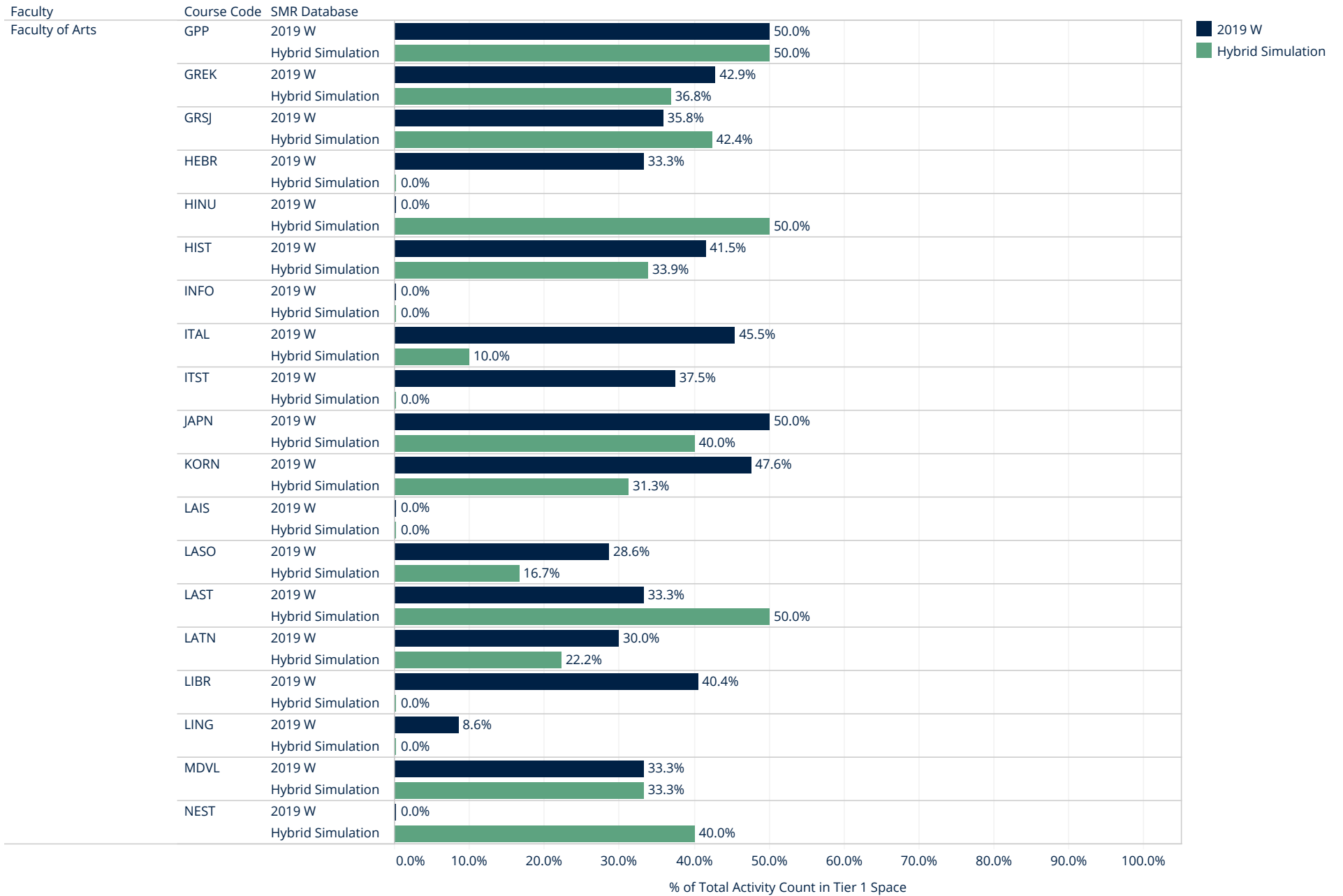
## Tier 1 Comparison per Faculty & Department



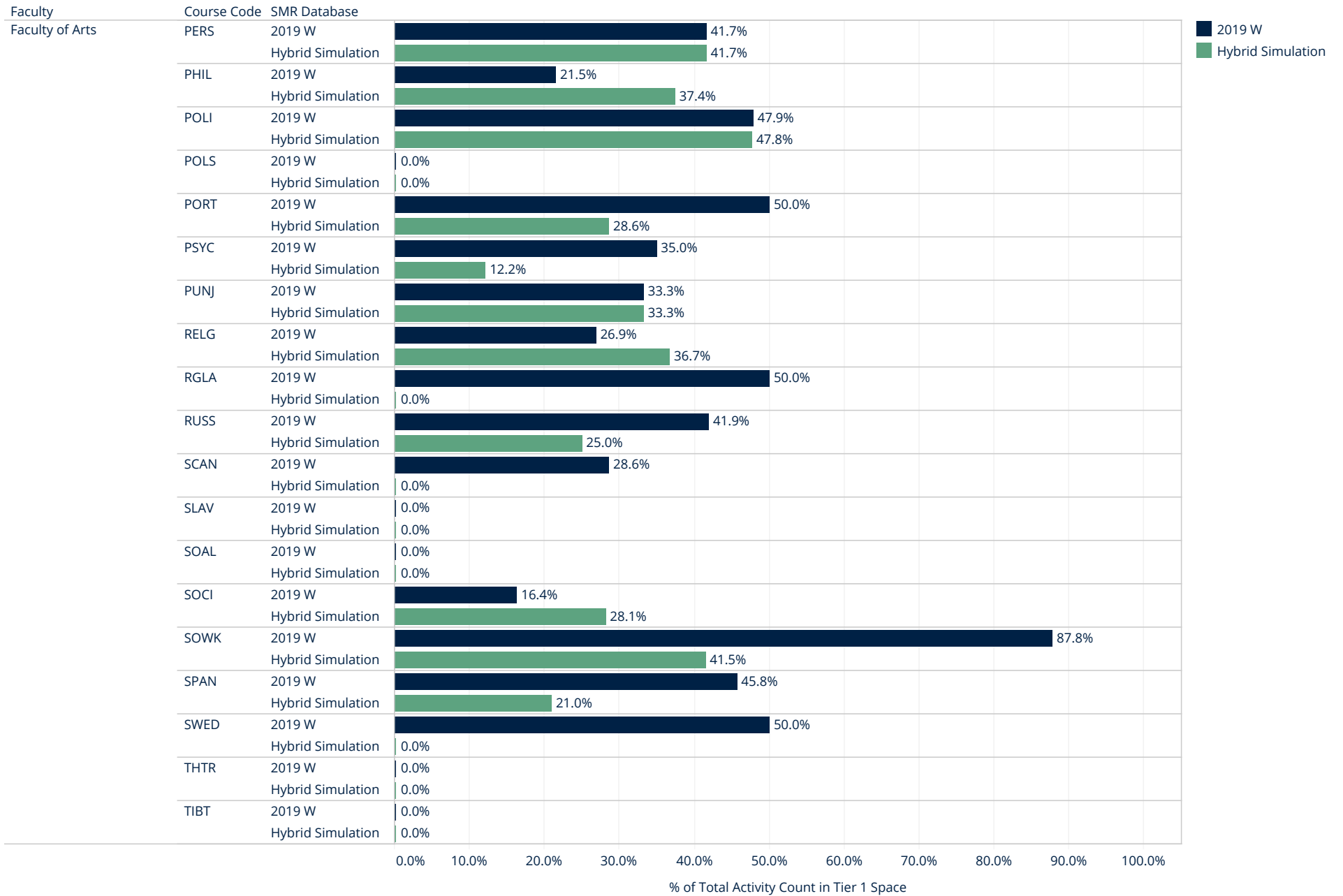
## Tier 1 Comparison per Faculty & Department



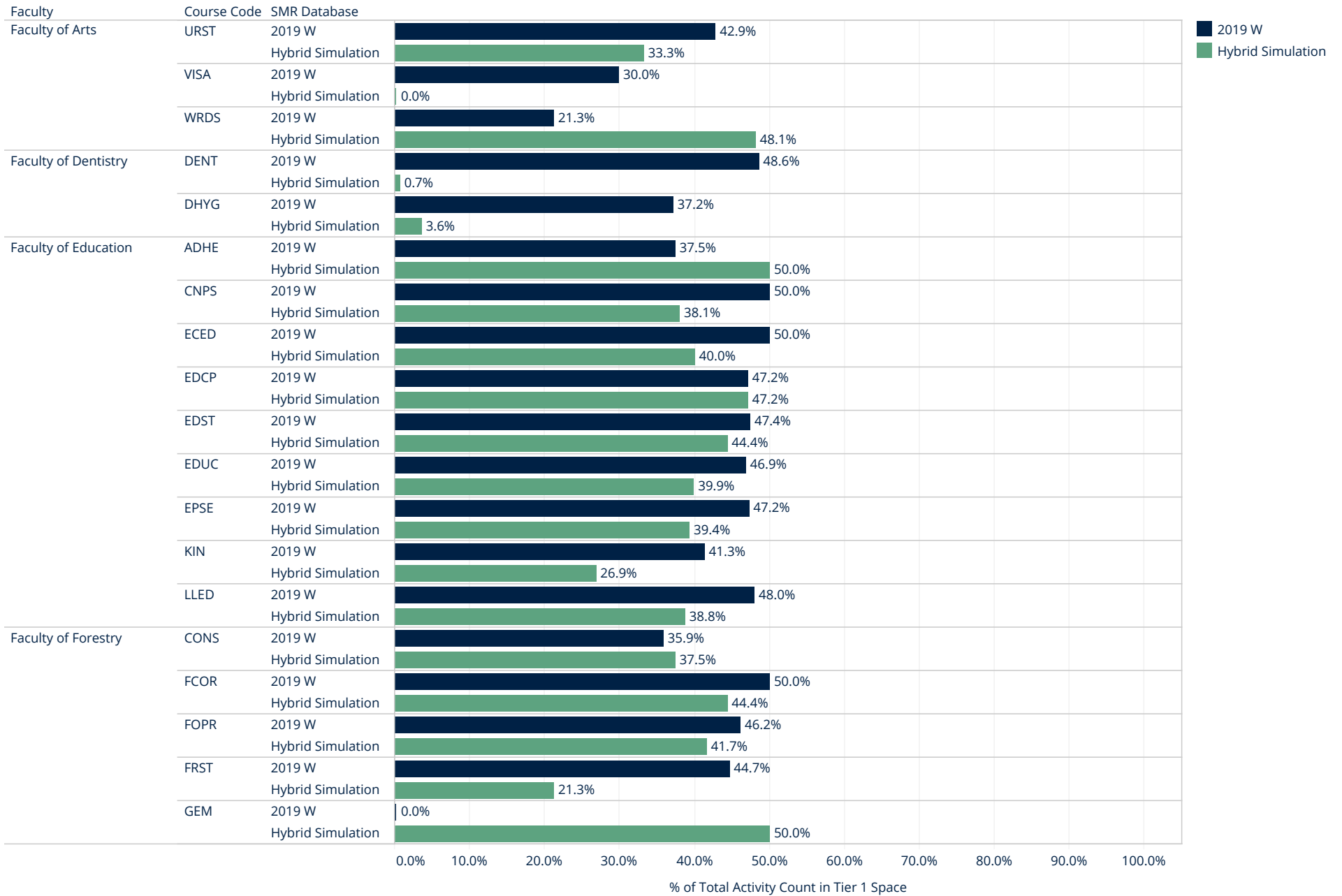
# Tier 1 Comparison per Faculty & Department



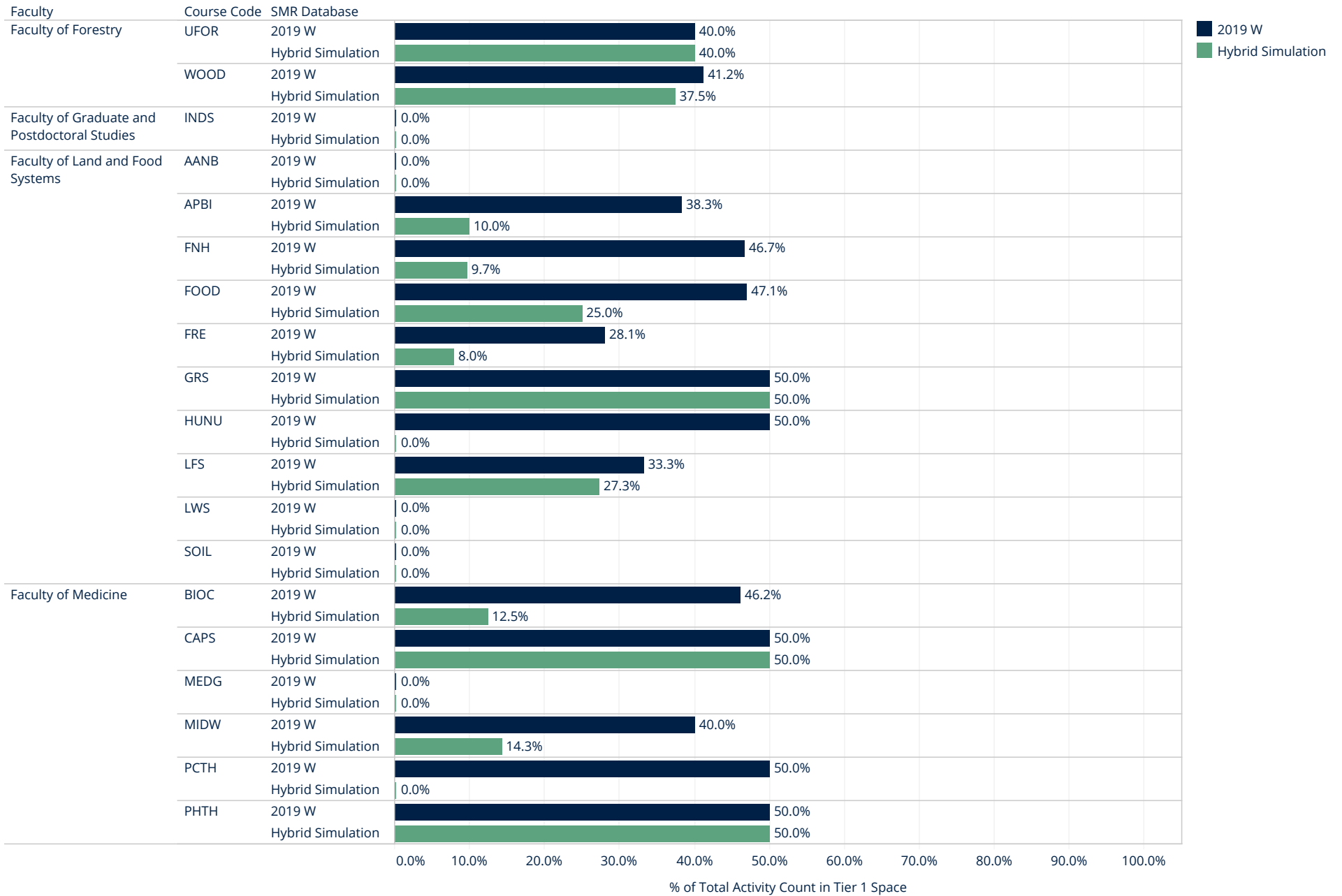
## Tier 1 Comparison per Faculty & Department



## Tier 1 Comparison per Faculty & Department

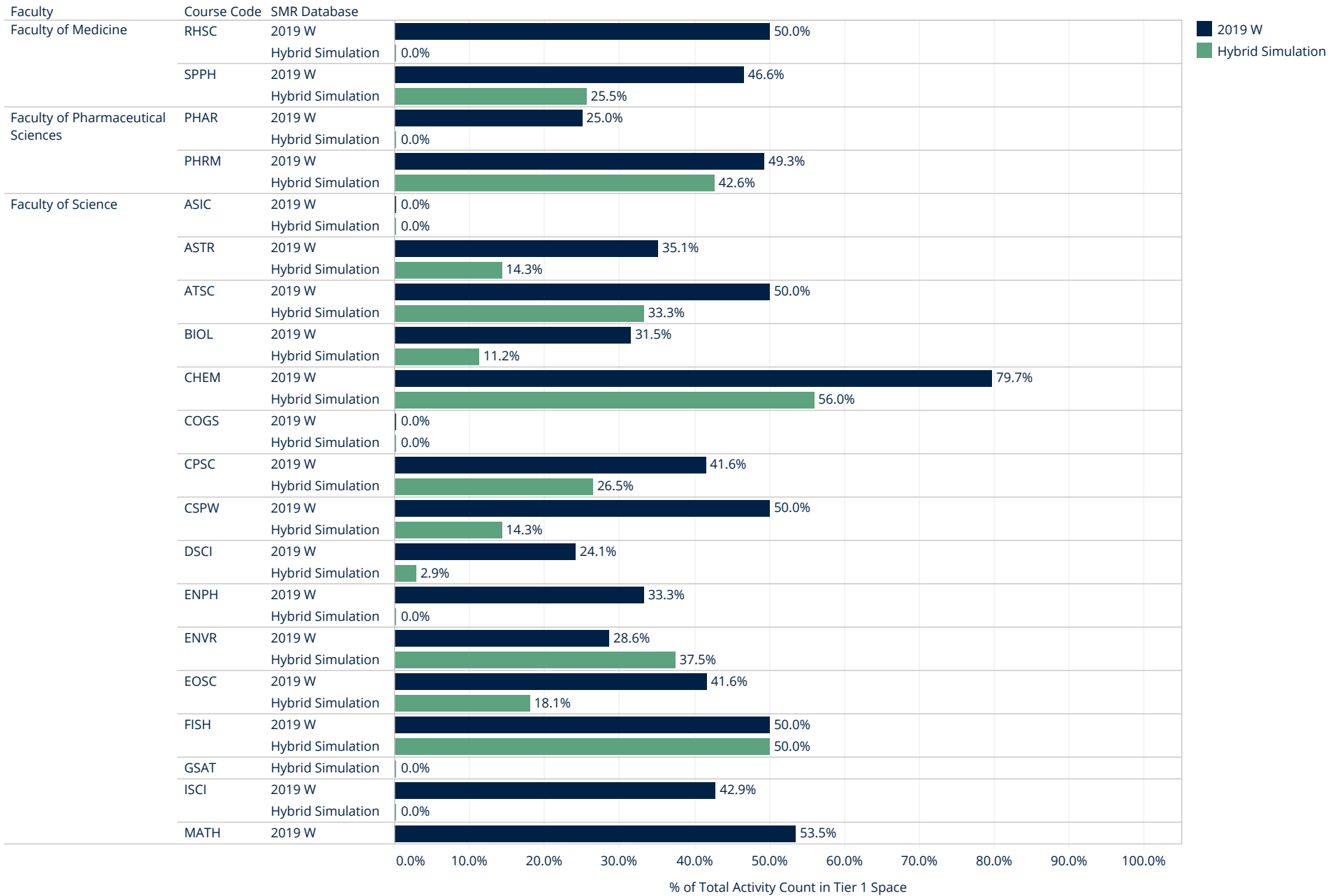


## Tier 1 Comparison per Faculty & Department

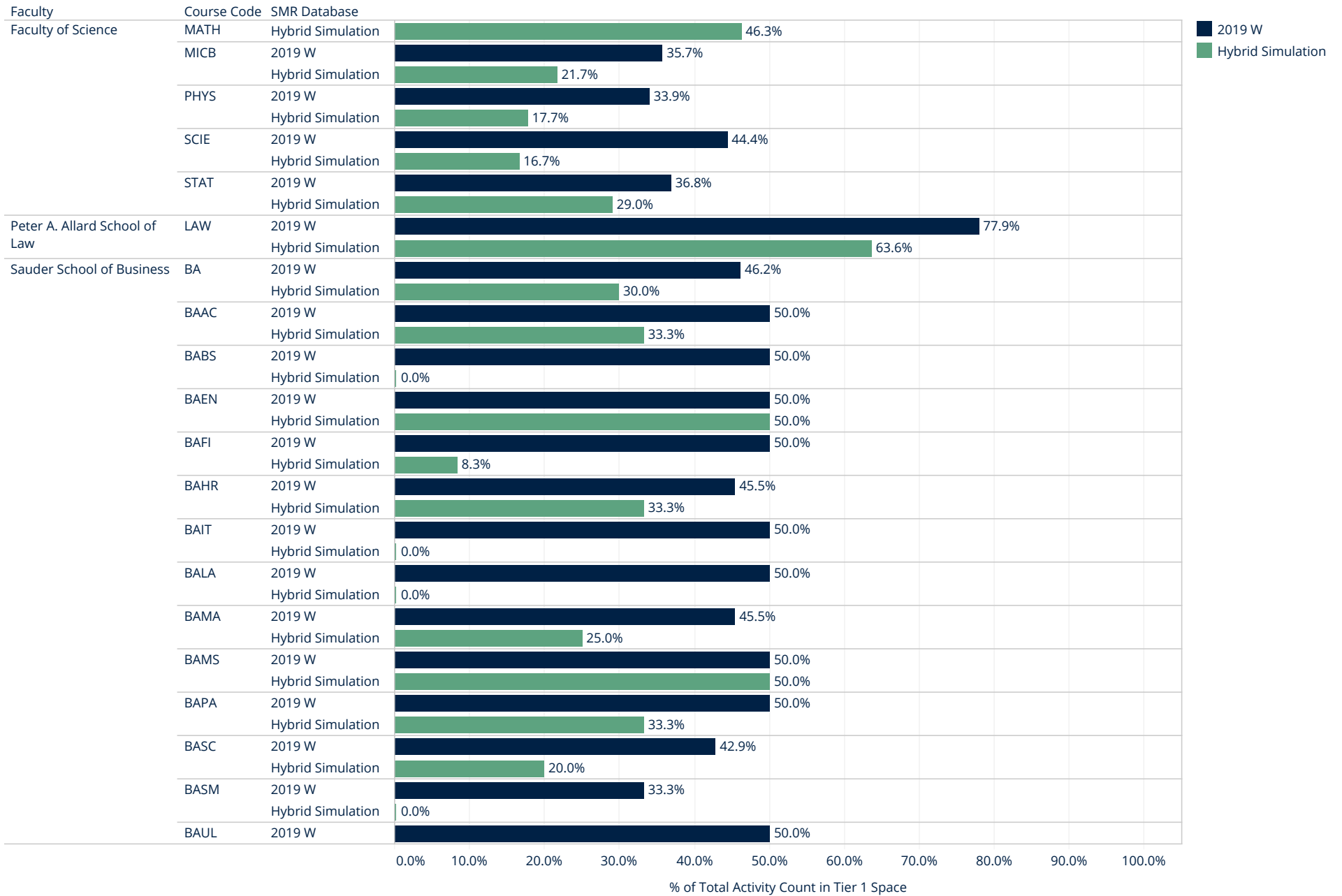




## Tier 1 Comparison per Faculty & Department



## Tier 1 Comparison per Faculty & Department



## Tier 1 Comparison per Faculty & Department

